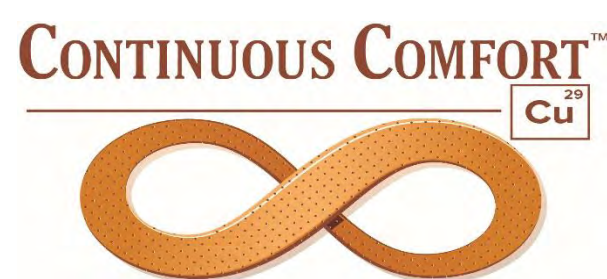
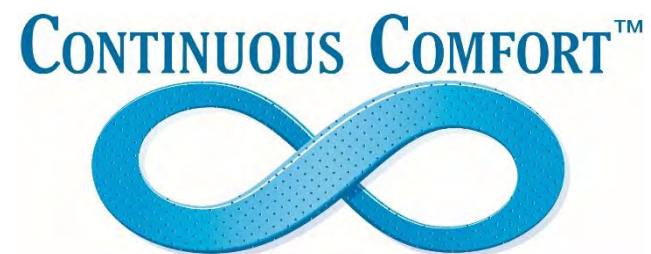




MOUNTAIN TOP FOAM



Mountain Top Foam's FSC® Certification

with NEPCon is recognized by the
RainForest Alliance.



The mark of
responsible forestry



INTRODUCING **FSC®** **Certified** **Latex**



The mark of
responsible forestry



MountainTopFoam.com

FSC Certified

- Mountain Top Foam's FSC® Certificated with NEPCon is recognized by the RainForest Alliance.
- Mountain Top is Currently the First and Only North American Latex Producer that is FSC Certified.
- It is a Full Chain of Custody Certificate. The Plantation, The Importer, and MTF's Production facility are all Certified.
- Consumers want real and meaningful products and certifications.
 - FSC and RainForest Alliance Certs found on Thousands of consumer products from Major Brands.

FSC – 10 Principles



The mark of
responsible forestry



- **PRINCIPLE #1: COMPLIANCE WITH LAWS AND FSC PRINCIPLES** - Forest management shall respect all applicable laws of the country in which they occur, and international treaties and agreements to which the country is a signatory, and comply with all FSC Principles and Criteria.
- **PRINCIPLE #2: TENURE AND USE RIGHTS AND RESPONSIBILITIES** - Long-term tenure and use rights to the land and forest resources shall be clearly defined, documented and legally established.
- **PRINCIPLE #3: INDIGENOUS PEOPLES' RIGHTS** - The legal and customary rights of indigenous peoples to own, use and manage their lands, territories, and resources shall be recognized and respected.
- **PRINCIPLE #4: COMMUNITY RELATIONS AND WORKER'S RIGHTS** - Forest management operations shall maintain or enhance the long-term social and economic well being of forest workers and local communities.
- **PRINCIPLE # 5: BENEFITS FROM THE FOREST** - Forest management operations shall encourage the efficient use of the forest's multiple products and services to ensure economic viability and a wide range of environmental and social benefits.
- **PRINCIPLE #6: ENVIRONMENTAL IMPACT** - Forest management shall conserve biological diversity and its associated values, water resources, soils, and unique and fragile ecosystems and landscapes, and, by so doing, maintain the ecological functions and the integrity of the forest.
- **PRINCIPLE #7: MANAGEMENT PLAN** - A management plan — appropriate to the scale and intensity of the operations — shall be written, implemented, and kept up to date. The long-term objectives of management, and the means of achieving them, shall be clearly stated.
- **PRINCIPLE #8: MONITORING AND ASSESSMENT**- Monitoring shall be conducted — appropriate to the scale and intensity of forest management — to assess the condition of the forest, yields of forest products, chain of custody, management activities and their social and environmental impacts.
- **PRINCIPLE # 9: MAINTENANCE OF HIGH CONSERVATION VALUE FORESTS** - Management activities in high conservation value forests shall maintain or enhance the attributes which define such forests. Decisions regarding high conservation value forests shall always be considered in the context of a precautionary approach.
- **PRINCIPLE # 10: PLANTATIONS** - Plantations shall be planned and managed in accordance with Principles and Criteria 1-9, and Principle 10 and its Criteria. While plantations can provide an array of social and economic benefits, and can contribute to satisfying the world's needs for forest products, they should complement the management of, reduce pressures on, and promote the restoration and conservation of natural forests.

Environmental Protection

- FSC's forest management standards expand protection of water quality, prohibit harvest of rare old-growth forest, prevent loss of natural forest cover and prohibit highly hazardous chemicals, which are all unique aspects of the system. For example, FSC prohibits the use of atrazine, which is otherwise legal in the US but banned in Europe because it has been shown to cause water pollution and birth defects. Other certifications allow atrazine use, including aerial spraying of the chemical.



The mark of
responsible forestry



FSC Certification Statistics as of September 2018

- 35,426,555 acres certified in the US
- 169,143,329 acres certified in the US and Canada
- 3,879 companies Chain-of-Custody certified in the US
- 4,636 companies Chain-of-Custody certified in the US and Canada
- 7,038 sites certified in the US



The mark of
responsible forestry

In Short MTF's FSC® Certification

- MTF's FSC® Certification is designed to conserve ecosystems, protect biodiversity and waterways, conserve forests, reduce agrochemical use, and safeguard the well-being of workers and local communities.



The mark of
responsible forestry



What is Latex? How is it Made?



Latex is:

A suspension of rubber particles
in water.

- SBR – Styrene Butadiene Rubber
- Natural Rubber
- Blend of both

What is Natural Rubber?

- White milky sap from the Rubber Tree. Most Plantations are in Malaysia.
- Benefits:
 - High Tensile and Tear Strength
 - Durable
 - Renewable Resource



Mountain Top Foam Continuous Comfort™ Latex

- MTF Continuous Comfort Latex
 - MTF Latex is fully blended in a foaming head
 - A computer ensures that a precise amount of latex flows onto the moving mold system
 - Electronically controlled manipulators close the top of the mold on the moving mold pour line
 - The freshly poured latex immediately travels into a vulcanizer for curing
 - Vulcanization holds the latex particles in suspension and sets a smooth even structure within the latex
 - When the latex exits the vulcanizer the top and bottom molds are mechanically removed
 - The latex ribbon is then washed three times removing the mold release and soap
 - During the wash/rinse operations the latex is mechanically compressed removing any false loft from the foam
 - The continuous ribbon of latex travels into the dryer for final curing and drying
 - The MTF “Continuous Comfort™” latex is automatically cut to the exact size required
 - There is never a glue seam in the middle of a king or under the sleeping surface in a queen
 - There is never a feel difference from one side of your latex mattress to the other

There is only

CONTINUOUS COMFORT™



Exploring MTF Continuous Comfort™ Latex

- MTF Continuous Process Latex Combines all the benefits of Talalay and Dunlop into 1 ECO-FRIENDLY Product.

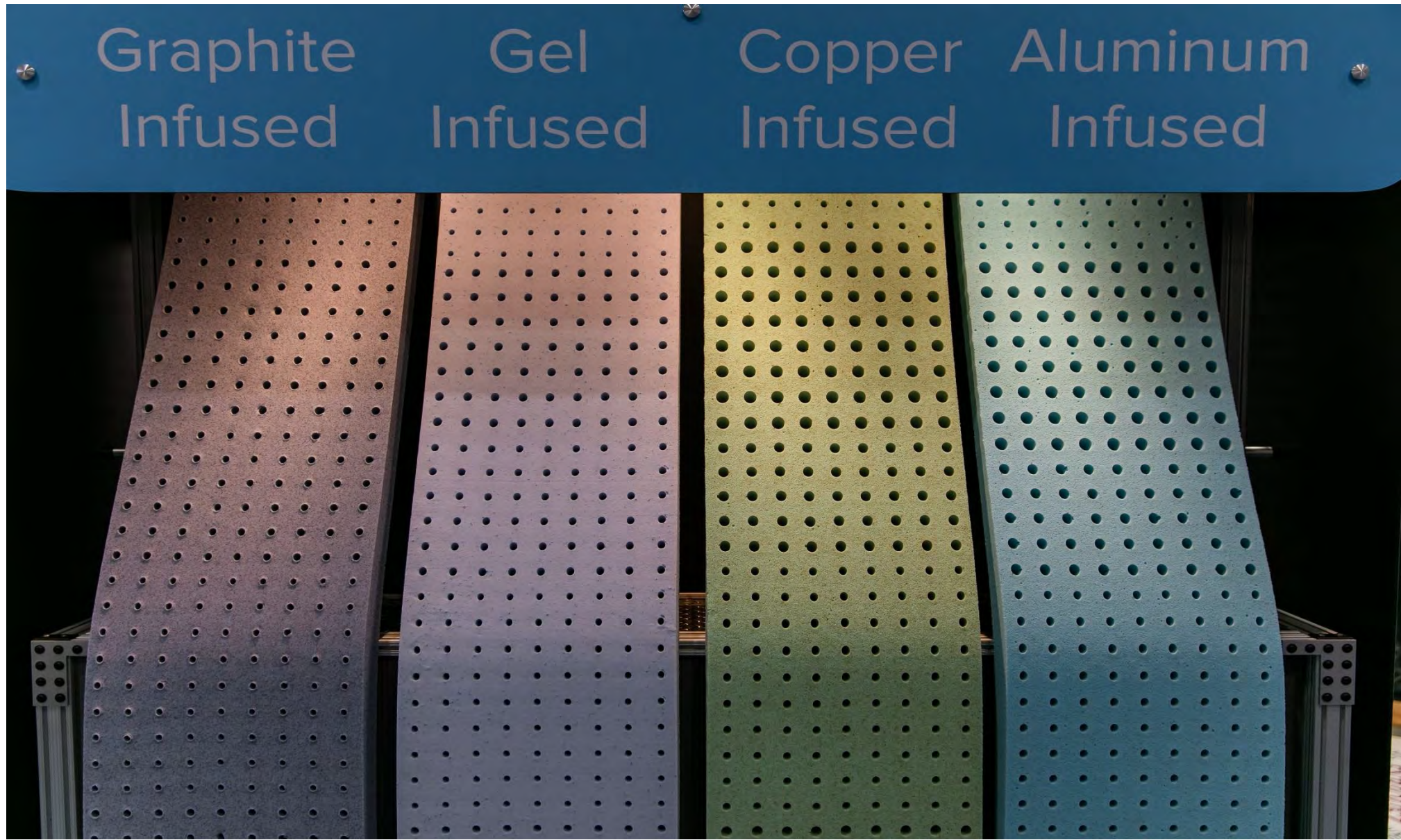
**Consistent Luxurious Feel + High Support Factor + Ultimate
Durability + Efficient Manufacturing =**

Continuous Process Latex

Mountain Top Product List

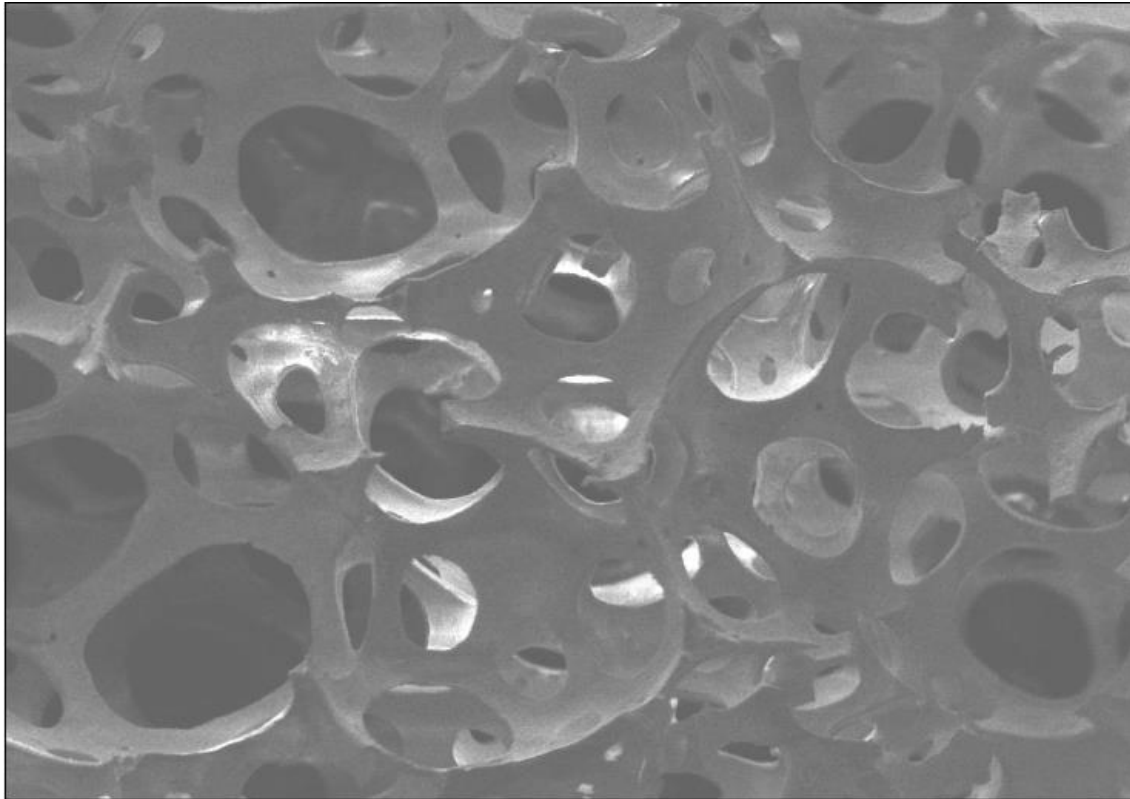
- SBR Latex – Styrene Butadiene Rubber, Man Made, Ultra consistent, Value Priced.
- 20% Natural Blend- 20% Natural FSC Certified Rubber and 80% SBR, Blends the best of both products, more buoyant feel.
- 100% Natural - Made with FSC Certified Natural Latex.
- Copper Gel Infused – Highly conductive copper helps conduct heat away from the body.
- Aluminum Gel Infused- Conductive Aluminum helps move heat away from the body
- Graphite Latex- Provides FR Benefit and allows of the use of a lighter FR Solution.
- Ceramic Gel Infused Latex – Conductive Ceramic Gel speeds the transfer of heat.
- Titanium Gel Infused Latex- Conductive, but also plays on the durability of Titanium and latex.

MTF Infused Latex



Construction

- Continuous Process Latex has an open cell structure. This allows more room temperature air to flow through it, taking heat away from your body.





Breathable

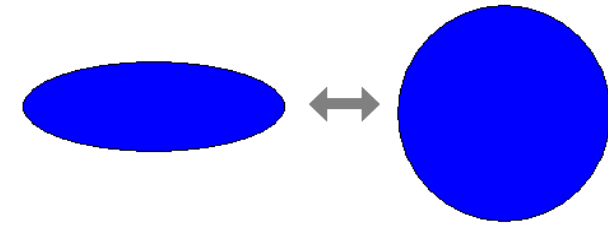
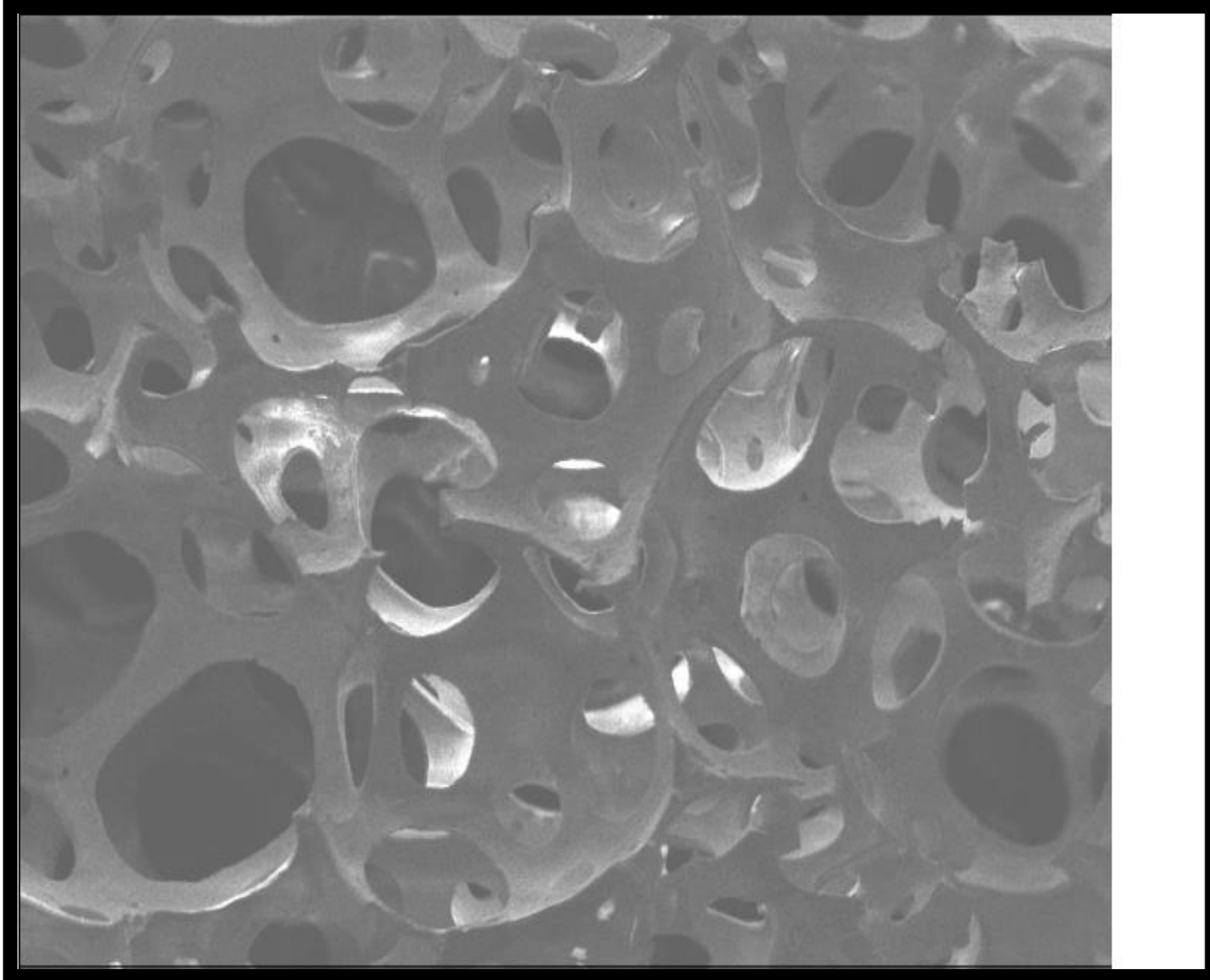
- Latex has an open cell structure, allowing for greater air flow taking heat away from your body.



Sample	Air Flow (cm ³ /second)
MTF C0 Latex	2123
4 lb. Visco foam	283

Moderates Sleeping Temp, Never Too Hot & Never Too Cold

Durability



- Thicker cell walls made of Rubber retain shape and resist rupture better than other foams.



Support Factor

- A Foam's Support Factor is the difference in IFD between 25% compression and 65% compression.
- The higher the number the more supportive the foam .
- MTF Latex is 35% more supportive than Talalay.

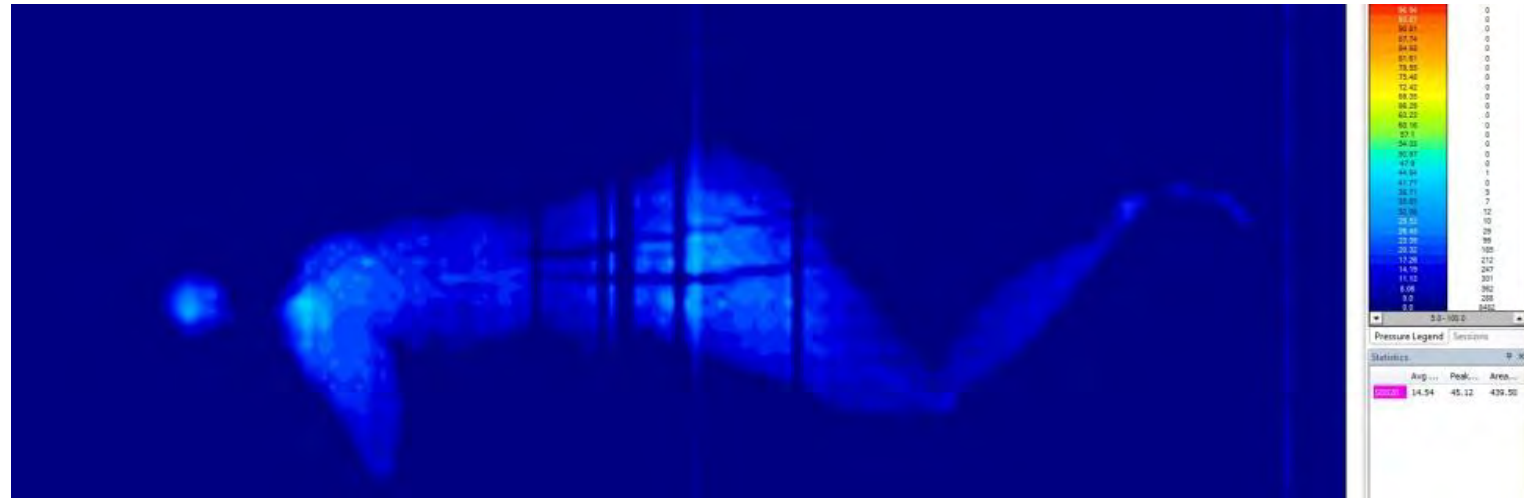
Support Factor

MTF C0 Latex	3.6
MTF C2 Gel Infused	3.8
Talalay	2.8

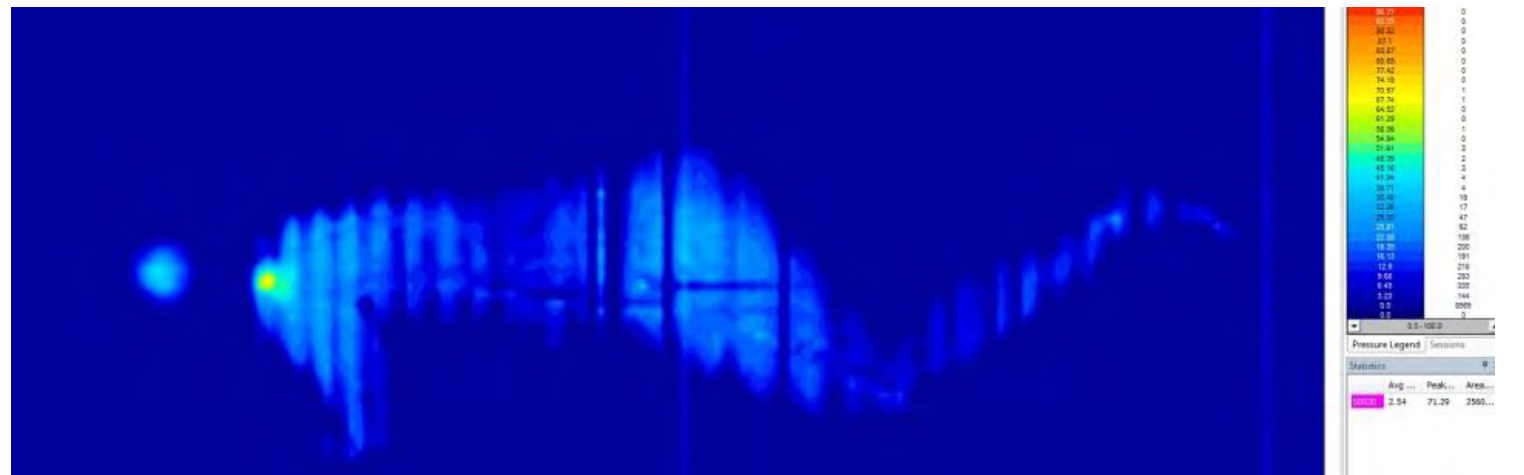


7 Zone Latex Core vs Non-Zoned Latex Core

7 Zone



Mono Block





MTF PURE Latex

- MTF Latex products are Certified Pure 100% Latex Rubber. We do not add any fillers or binders to any of our products.
- Fillers and binders destroy the quality of the latex and negate the anti-microbial and anti-bacterial benefits of the latex.





MTF Latex Benefits

- **MTF products have a class 1 Oeko-Tex certification**
 - safe for infants and children.
- **Thermo Neutral**
 - 6-9 times more breathable than traditional memory foam.
- **Durable**
- **Pressure Relieving**
- **Supportive**
 - 30%-50% More than Talalay
- **Anti-microbial**
- **Posturized 7 zoned**



Continuous Process Benefits:

- MTF Production facility produces ZERO hazardous waste material.
- 95% + of Waste produced at MTF is Recycled
- In house water purification plant- water is purified to levels higher than incoming water from city, waste water is tested daily and Ok'd for release back to environment.

What Is MTF Latex?



- Conformability
- Oeko-Tex Class 1 Certified
- Muscle Relaxation
- FSC Certified
- Open Cell Structure
- RainForest Alliance Approved
- Temperature Insensitive